

# Panel Seal Rocker Switches



# CL-LB

## FEATURES

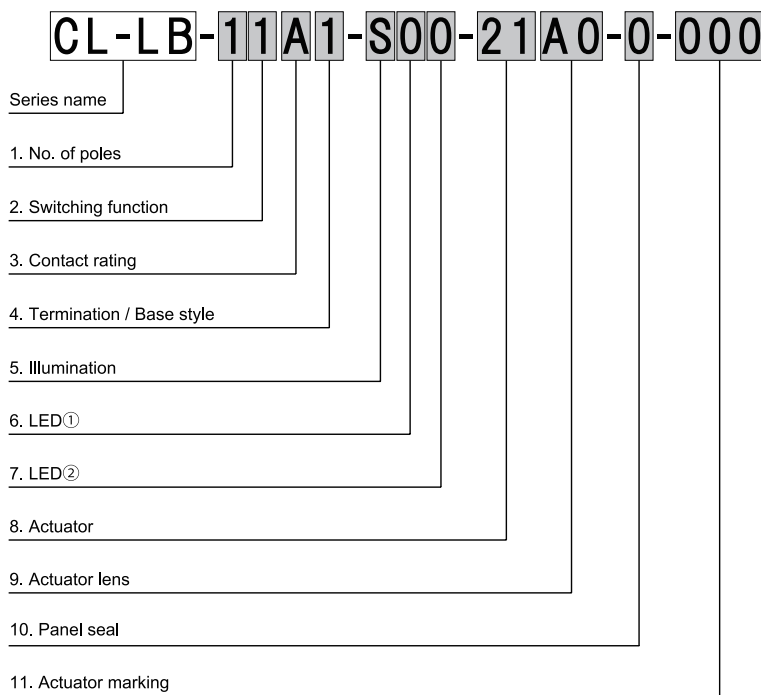
- Multi-function, versatile function switches
- Actuator is designed for excellent operability from ergonomics standpoint.



## APPLICATION

- Function operation switches for construction machinery
- Function operation switches for automotive



## PART NUMBER DESIGNATIONS



No.	Specifications		Code
1	No. of circuit	1 pole	1
2	Switching function	ON – OFF	1
3	Contact rating	15A, 24V DC	A
		20A, 12V DC	B
4	Termination / Base style	#250 TAB / 8 term, no barriers	1
5	Illumination	No LED	S
6	LED①	No LED	0
7	LED②	No LED	0
8	Actuator	Actuator 2	Black
			
9	Actuator lens	A	No lens
			
10	Panel seal	Without panel seal	0
		With panel seal	1
11	Actuator marking	No symbol	000

## LIST OF PART NUMBERS

Contact rating	Panel seal	Without panel seal	With panel seal
15A, 24V DC		CL-LB-11A1-S00-21A0-0-000	CL-LB-11A1-S00-21A0-1-000
20A, 12V DC		CL-LB-11B1-S00-21A0-0-000	CL-LB-11B1-S00-21A0-1-000

## ■ SPECIFICATIONS

### ● Standard specifications

Item	Specifications
Operating temp. range	-40 ~ 85°C
Storage temp. range	-40 ~ 85°C
Protection grade	Panel seal (Equivalent to IP68)
No. of poles	1 pole
Switching function	ON-OFF
Operating force	3±1.5N

### ● Life

Item	Specifications
Electrical life	50,000 cycles (Rated load) Switching frequency 7.5 cycles/min
Mechanical life	150,000 cycles (Rated load) Switching frequency 30 cycles/min

### ● Electrical specifications

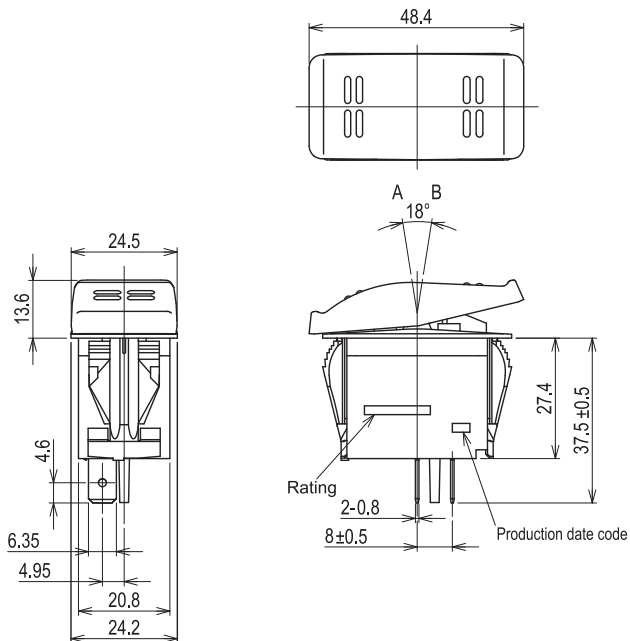
Item	Specifications
Contact rating	15A, 24V DC 20A, 12V DC
Contact resistance	10mΩ maximum (Initial)
Insulation resistance	50MΩ minimum (DC500V)
Dielectric strength	AC 1,500V 1minute

### ● Environmental characteristics

Item	Specifications
Vibration	Amplitude 1.52 mm or Acceleration 98m/s² 10-500 Hz, 10-500-10Hz 15minute 3 directions for 12 times each
Shock	294m/s², 11ms 6 directions for 3 times each
Humidity	-10 ~ 65°C (Relative Humidity 0 ~ 98 %), 24 h, 10 cycles
High temp. exposure	85°C, 16h
Low temp. exposure	-40°C, 16h
Temp. cycling	-55°C(0.5h) ~ 85°C(0.5h), 5 cycles
Corrosion resistance (Salt spray test)	Temp. 35±2°C, Salt spray of concentration of 5±1% (mass ratio), Spray pressure 68.6 ~ 176kPa, 48h spray

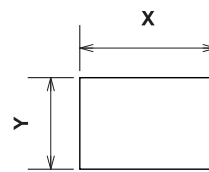
## ■ OUTLINE DIMENSIONS

(Unit: mm)



## ■ PANEL CUT-OUT DIMENSIONS

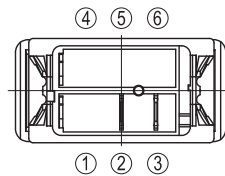
(Unit: mm)



X	Y
36.83	21.08

	Panel thickness
Without panel seal	0.76 ~ 6.35
With panel seal	0.76 ~ 2.77 3.73 ~ 3.98

## ■ CIRCUIT CHARACTERISTICS



Circuit characteristic	
A pos	B pos
ON	OFF
②-③	-

### NIDEC COPAL ELECTRONICS CORP.

7-5-25 Nishi-Shinjuku, Shinjuku-ku,  
Tokyo 160-0023 JAPAN Phone:+81-3-3364-7055 Fax:+81-3-3364-7098

### NIDEC COPAL ELECTRONICS, INC.

367 Van Ness Way, Suite 601  
Torrance, CA 90501 U.S.A  
Phone:+1-310-618-0225 Fax:+1-310-618-9984

### NIDEC COPAL ELECTRONICS (SHANGHAI) CO.,LTD.

Unit A, 4/F, No.4 Bldg., No.253, Ai Du Rd., Wai Gao Qiao  
Free Trade Zone, Shanghai, CHINA P.C.200131  
Phone:+86-21-5046-3009 Fax:+86-21-5046-3115

### NIDEC COPAL ELECTRONICS (TAIWAN) CO., LTD.

18F-1, No.57, Sec.2, Tun Hwa S.Rd., Taipei, TAIWAN  
Phone:+886-2-27030577 Fax:+886-2-27010577

■ Specifications are subject to change without notice.

A *Nidec* Group Company

**COPAL ELECTRONICS** All for dreams  
[www.nidec-copal-electronics.com](http://www.nidec-copal-electronics.com)

### NIDEC COPAL ELECTRONICS GMBH

Mergenthalerallee 79-81  
65760 Eschborn GERMANY  
Phone:+49-6196-92775-0 Fax:+49-6196-92775-75

### NIDEC COPAL ELECTRONICS KOREA CORP.

2F Jin-il Bldg., 52-7 Banpo-Dong, Seocho-Gu,  
Seoul 137-040 KOREA  
Phone:+82-2-3482-5861 Fax:+82-2-3482-5860

### NIDEC COPAL ELECTRONICS SINGAPORE PTE. LTD.

180B Bencoolen Street #07-05 The Bencoolen Singapore 189648  
Phone:+65-6535-0056 Fax:+65-6535-0087