

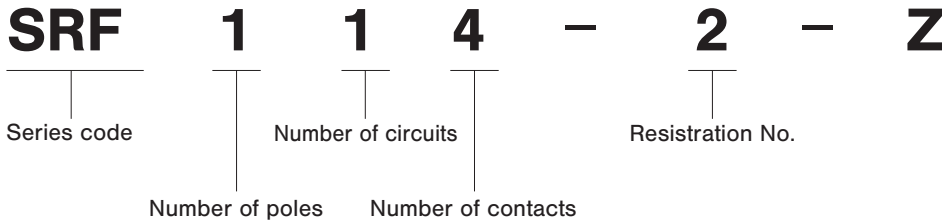
# SRF

## Miniature Rotary Switches

RoHS Compliant



### Part Numbering



### Standard Accessories

《Supplied with switch》

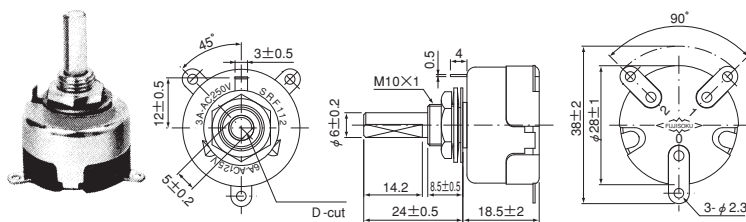
| Part Name  | Hex Nut        | Lockwasher     | Washer         |
|------------|----------------|----------------|----------------|
| Part No.   | ① 140008010240 | ② 140008030056 | ③ 140008020009 |
| Dimensions |                |                |                |
| Finish     | —              | Zinc plated    | Nickel plated  |

### Combinations of Accessories

| Part No. | Accessories |   |   |
|----------|-------------|---|---|
|          | ①           | ② | ③ |
| SRF112   | ○           | ○ | ○ |
| SRF113   | ○           | ○ | ○ |
| SRF114-2 | ○           | ○ |   |

### ☆ SRF112-Z

### 1-pole 2-positions



Terminal numbers are shown on the bottom of the switch.

| Shaft stop positions | Terminal connecting common(c) |   | Circuit diagram | Number of step | Step angle |
|----------------------|-------------------------------|---|-----------------|----------------|------------|
|                      | 1                             | 2 |                 |                |            |
| 1                    | ○                             |   |                 | 1              | 90°        |
| 2                    |                               | ○ |                 |                |            |

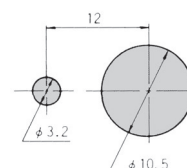
● The circuit diagrams show the switches as viewed from the terminal side with the shaft fully turned in the counterclockwise direction.

| Rating                             | Initial contact resistance | Dielectric strength | Insulation resistance  | Electrical life |
|------------------------------------|----------------------------|---------------------|------------------------|-----------------|
| SRF112-Z<br>AC125V 6A<br>AC250V 3A | 20mΩ Max.<br>(DC2~4V 1A)   | AC1500V<br>1 minute | 100MΩ Min.<br>(DC500V) | 10,000 cycles   |

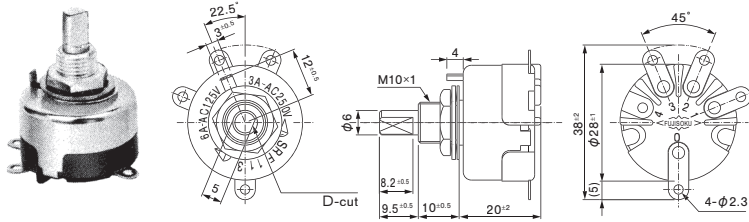
● Ratings are based on resistance load.

### Panel Cut-Out Dimensions

Panel thickness : 3.5 mm max.



★SRF113-Z 1-pole 3-positions



Terminal numbers are shown on the bottom of the switch.

| Shaft stop positions | Terminal connecting common(c) |   |   | Circuit diagram | Number of step | Step angle |
|----------------------|-------------------------------|---|---|-----------------|----------------|------------|
|                      | 1                             | 2 | 3 |                 |                |            |
| 1                    | ○                             |   |   |                 | 2              | 45°        |
| 2                    |                               | ○ |   |                 |                |            |
| 3                    |                               |   | ○ |                 |                |            |

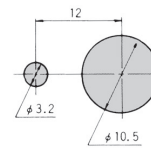
●The circuit diagrams show the switches as viewed from the terminal side with the shaft fully turned in the counter-clockwise direction.

| Rating   |                        | Initial contact resistance | Dielectric strength | Insulation resistance  | Electrical life |
|----------|------------------------|----------------------------|---------------------|------------------------|-----------------|
| SRF113-Z | AC125V 6A<br>AC250V 3A | 20mΩ Max.<br>(DC2~4V 1A)   | AC1500V<br>1 minute | 100MΩ Min.<br>(DC500V) | 5,000 cycles    |

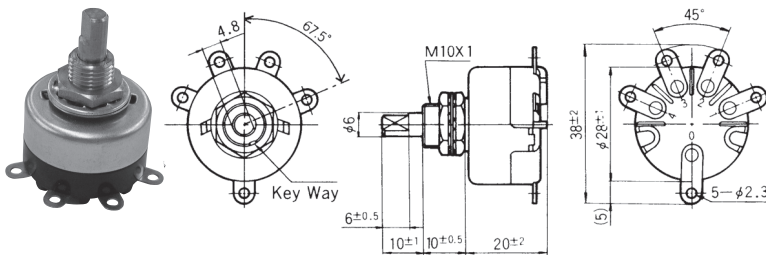
●Ratings are based on resistance load.

■ Panel Cut-Out Dimensions

Panel thickness : 5 mm max.



★SRF114-2-Z 1-pole 4-positions



Terminal numbers are shown on the bottom of the switch.

| Shaft stop positions | Terminal connecting common(c) |   |   |   | Circuit diagram | Number of step | Step angle |
|----------------------|-------------------------------|---|---|---|-----------------|----------------|------------|
|                      | 1                             | 2 | 3 | 4 |                 |                |            |
| 1                    | ○                             |   |   |   |                 | 3              | 45°        |
| 2                    |                               | ○ |   |   |                 |                |            |
| 3                    |                               |   | ○ |   |                 |                |            |
| 4                    |                               |   |   | ○ |                 |                |            |

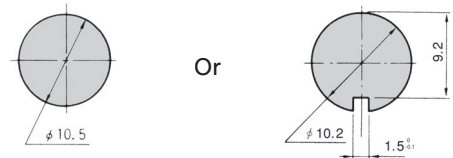
●The circuit diagrams show the switches as viewed from the terminal side with the shaft fully turned in the counter-clockwise direction.

| Rating     |                        | Initial contact resistance | Dielectric strength | Insulation resistance  | Electrical life |
|------------|------------------------|----------------------------|---------------------|------------------------|-----------------|
| SRF114-2-Z | AC125V 3A<br>AC250V 1A | 20mΩ Max.<br>(DC2~4V 1A)   | AC1500V<br>1 minute | 100MΩ Min.<br>(DC500V) | 5,000 cycles    |

●Ratings are based on resistance load.

■ Panel Cut-Out Dimensions

Panel thickness : 3 mm max.



■ Handling Precautions

1. Soldering Specifications

(1) Manual Soldering

Device : Soldering iron

① 420°C, Max.; 3 seconds, Max.

■ Optional Accessory

1. No dedicated knob is available for the SRF Series products.