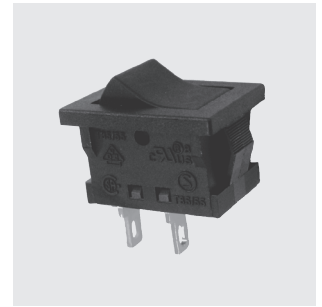


# SLE6·SLE10

Dust Proof

RoHS Compliant



## Miniature Power Rocker Switches

C-US UL

CSA

VDE

SEMKO

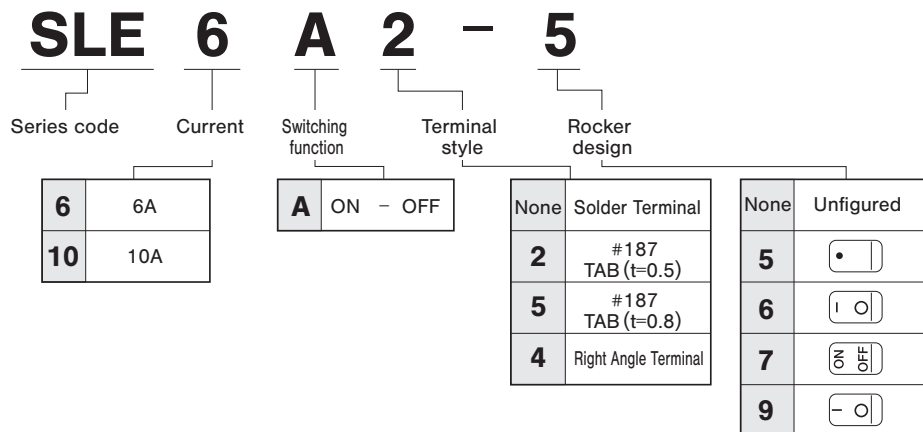
### Features

1. C-US UL , CSA , VDE and SEMKO approved products
2. Snap-in panel mounting
3. Compact size is suited for space-saving design.
4. Best suited for power supply of equipment.
5. Dust-proof type
6. Breaking distance is 3 mm or over.

### Specifications

Rating	SLE6	Max.	6 A 125 VAC/4 A 250 VAC (Resistive load)
		Min.	10 mA 5 VAC/DC (Resistive load)
	SLE10	Max.	10 A 125 VAC/5 A 250 VAC (Resistive load)
		Min.	10 mA 5 VAC/DC (Resistive load)
Initial contact resistance		20 mΩ max. (1 A 2~4 VDC)	
Dielectric strength		1,500 VAC 1 minute (Between terminals)	
Insulation resistance		100 MΩ min. (Between terminals)(500 VDC)	
Electrical life		10,000 cycles	
Operating force		2.45~12.7 N	
Operating temperature range		-25~+85°C	
Storage temperature range		-40~+85°C	

### Part Numbering



### Approvals

UL File No.E43275

CSA File No.LR38341

VDE License No.120752

SEMKO File No.SE-S-2101218R1

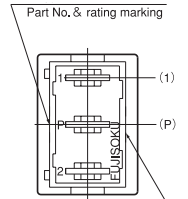
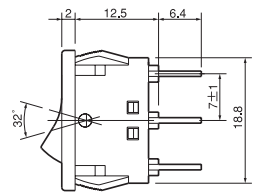
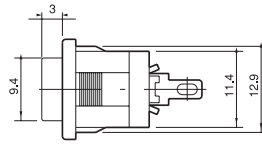
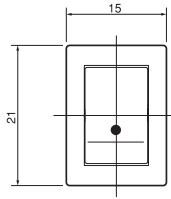
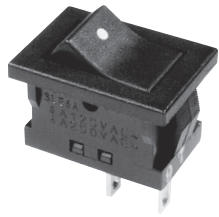
### Terminal Styles

Terminal styles	Solder Terminal	TAB#187		Right Angle Terminal
Styles	None	2	5	4
Dimensions				

### Marking Color

Frame color Rocker color	Marking color
Black	White

**SLE6A  
SLE10A**

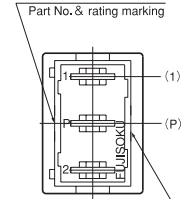
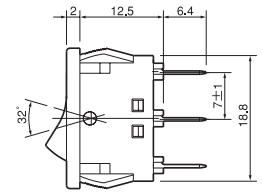
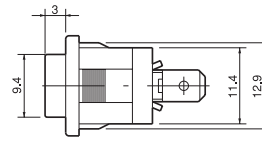
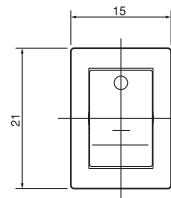
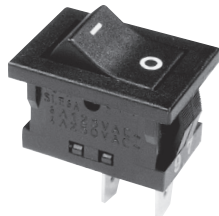


**Solder Terminal**

Switching function	Viewed from part No. & rating marking side	
Part No.	<b>SLE6A-■</b> <b>SLE10A-■</b>	<b>ON</b> <b>OFF</b>
Connecting terminals	P-1	-

■ : Show the rocker design number.

**SLE6A2  
SLE10A2**

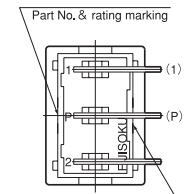
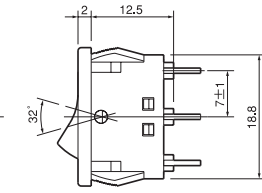
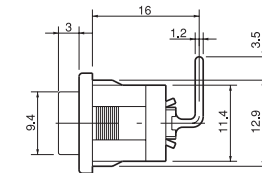
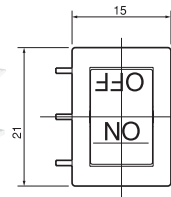
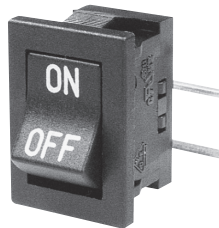


**TAB # 187**

Switching function	Viewed from part No. & rating marking side	
Part No.	<b>SLE6A2-■</b> <b>SLE10A2-■</b>	<b>ON</b> <b>OFF</b>
Connecting terminals	P-1	-

■ : Show the rocker design number.

**SLE6A4**



**Right Angle Terminal**

Switching function	Viewed from part No. & rating marking side	
Part No.	<b>SLE6A4-■</b>	<b>ON</b> <b>OFF</b>
Connecting terminals	P-1	-

■ : Show the rocker design number.

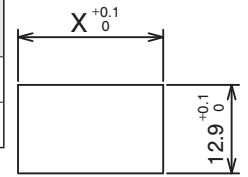
■ PC Hole Layouts

Series	<b>SLE6A4</b>
Dimensions	

■ Panel Cut-Out Dimensions

Switch

Panel thickness	X
0.75~1.25	19.2
1.25~3.5	19.4



Switch Guard Installation

Panel thickness	X
0.75~2.8	19.4

■ Table of Part Numbers

Current	Terminal styles	Switching function	Part No. and rating marking side				
6A	Solder Terminal	ON-OFF	<b>SLE6A</b>	<b>SLE6A-5</b>	<b>SLE6A-6</b>	<b>SLE6A-7</b>	☆ <b>SLE6A-9</b>
	t=0.5 TAB	ON-OFF	<b>SLE6A2</b>	<b>SLE6A2-5</b>	<b>SLE6A2-6</b>	<b>SLE6A2-7</b>	☆ <b>SLE6A2-9</b>
	t=0.8 TAB	ON-OFF	—	★ <b>SLE6A5-5</b>	★ <b>SLE6A5-6</b>	—	—
	Right Angle Terminal	ON-OFF	—	★ <b>SLE6A4-5</b>	★ <b>SLE6A4-6</b>	★ <b>SLE6A4-7</b>	—
10A	Solder Terminal	ON-OFF	★ <b>SLE10A</b>	★ <b>SLE10A-5</b>	★ <b>SLE10A-6</b>	☆ <b>SLE10A-7</b>	—
	t=0.5 TAB # 187	ON-OFF	—	<b>SLE10A2-5</b>	<b>SLE10A2-6</b>	★ <b>SLE10A2-7</b>	—

■ UL and CSA listed

Poles	Part number	Switching function	UL (※1)	CSA (※2)	VDE (※4)	SEMKO (※5)	Poles	Part number	Switching function	UL (※1)	CSA (※2)	VDE (※4)	SEMKO (※5)
1-pole	<b>SLE6A</b>	ON-OFF	○	○	○	○	1-pole	<b>SLE10A</b>	ON-OFF	○	○	○	○
	<b>SLE6A-5</b>		○	○	○	○		<b>SLE10A-5</b>		○	○	○	○
	<b>SLE6A-6</b>		○	○	○	○		<b>SLE10A-6</b>		○	○	○	○
	<b>SLE6A-7</b>		○	○	○	○		<b>SLE10A-7</b>		○	○	○	○
	<b>SLE6A-9</b>		○	○	○	○		<b>SLE10A2-5</b>		○	○	○	○
	<b>SLE6A2</b>		○	○	○	○		<b>SLE10A2-6</b>		○	○	○	○
	<b>SLE6A2-5</b>		○	○	○	○		<b>SLE10A2-7</b>		○	○	○	○
	<b>SLE6A2-6</b>		○	○	○	○							
	<b>SLE6A2-7</b>		○	○	○	○							
	<b>SLE6A2-9</b>		○	○	○	○							
	<b>SLE6A4-5</b>		○	○	○	○							
	<b>SLE6A4-6</b>		○	○	○	○							
	<b>SLE6A4-7</b>		○	○	○	○							
	<b>SLE6A5-5</b>		○	○	○	○							
<b>SLE6A5-6</b>	○	○	○	○									

- (※1) UL File No. E43275
- (※2) CSA File No. LR38341
- (※4) VDE File No. 120752
- (※5) SEMKO File No. SE-S-2101218R1

■ Handling Precautions

1. Soldering Specifications

(1) Manual Soldering

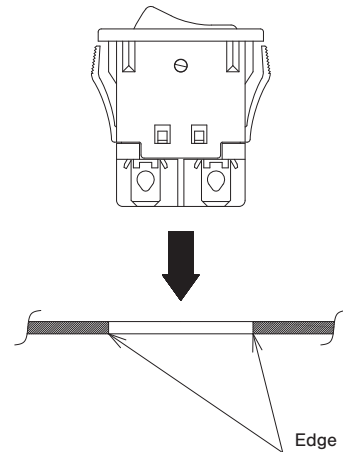
Device : Soldering iron

380°C, Max.; 3 seconds, Max.

※The tab terminals cannot be soldered

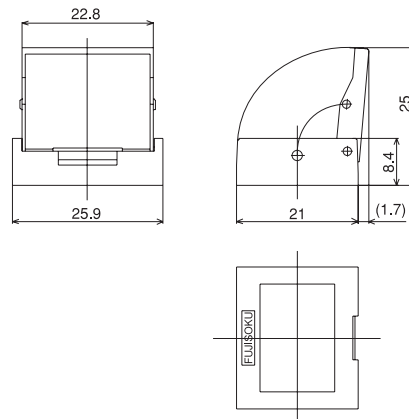
■ Precautions for Panel

The edges on the back of the cut-out panel should be squared so that the switch box bites the panel firmly. When the panel is coated, pay attention that the coating will not retain around the edge. Do not reuse the switch that was once mounted on a panel.



Switch Guard

Dedicated for use of rocker switches



■ Features

Clear visibility and one-touch mounting to save labor

■ Application

Best suited for protection of malfunction of miniature rocker switches (panel cutout: 19.2 x 12.9mm)

■ Specifications

Part Name: Switch guard

Part Number: 140007250027

Color: Black (transparent cover)

An application switch	●SLE6 series	●SLE10 series
	●SL10K series	●SLE210K series

※The switch guard cannot be used for the SLE10K series, SLE210K right angle terminal.