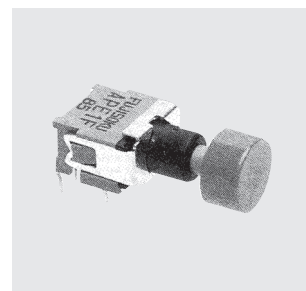


APE1F-5M-10-2-Z

Subminiature Pushbutton Switches

Washable

RoHS Compliant



Features

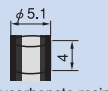
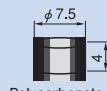
1. Twin-contact clip mechanism for high reliability.
2. Process sealed structure
3. Gold-plated contacts.
4. Terminal pin pitch: 2.54 mm.

Specifications

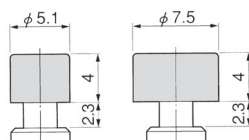
Rating	Max:100 mA 48 VAC/DC Min:1 μ A 20m VAC/DC 0.4 VA (Voltage range 20 mV~28 V) Current range 1 μ A~20 mA
Initial contact resistance	50 m Ω max. (1.5 mA 200 μ VAC)
Dielectric strength	500 VAC 1 minute
Insulation resistance	500 M Ω min. (500 VDC)
Electrical life	10,000 operations at maximum rating. 50,000 operations at min. rating or 0.4 VA
Operating force	0.78~2.94 N
Operating temperature range	-20~+85°C
Storage temperature range	-40~+85°C

Optional Accessories

《Sold separately》

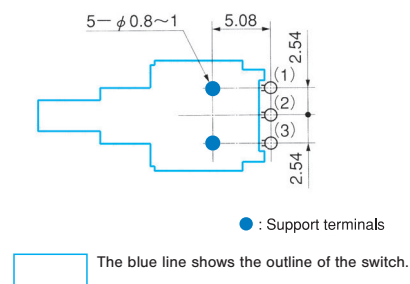
Part name	Color Button	
Dimensions	 ϕ 5.1 Polycarbonate resin	 ϕ 7.5 Polycarbonate resin
White	140000481572	140000481528
Red	140000481571	140000481529
Black	140000481495	140000481499

Color Button Mounting

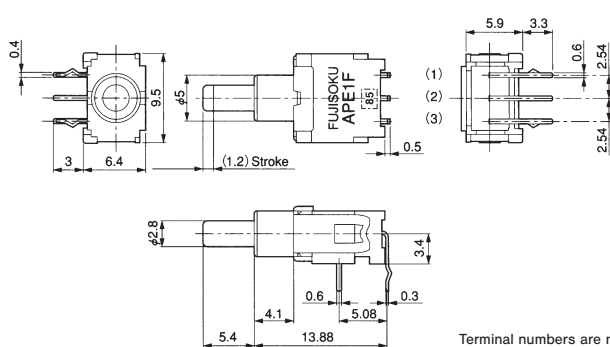




PC Hole Layouts

《Top view》



SPDT



Switching function		Push 
Part No.	ON	(ON)
Connecting terminals	2-3	2-1

Terminal numbers are not shown on the switch.

PC

■ Soldering Specifications

(1) Manual Soldering

Device : Soldering iron
380°C, Max.; 3 seconds, Max.

(2) Auto Soldering

Device : Jet wave type or dip type
275°C, Max.; 6 seconds, Max.

- Pre-heating should be done at temperatures ranging from 80°C to 120°C and within 120 seconds.

■ Flux Cleaning

- (1) Solvent : Fluorine or Alcohol type.
- (2) Cleaning after soldering should be done after the terminal temperature falls to 90°C or below, or after leaving the switch for five minutes or longer at room temperature.
- (3) Do not use ultrasonic cleaning.

■ Packaging Specifications