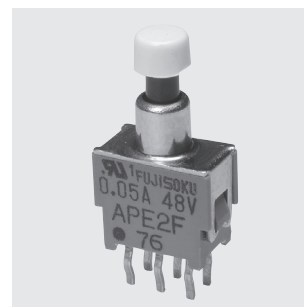


APE

Subminiature Pushbutton Switches

Washable

RoHS Compliant



UL

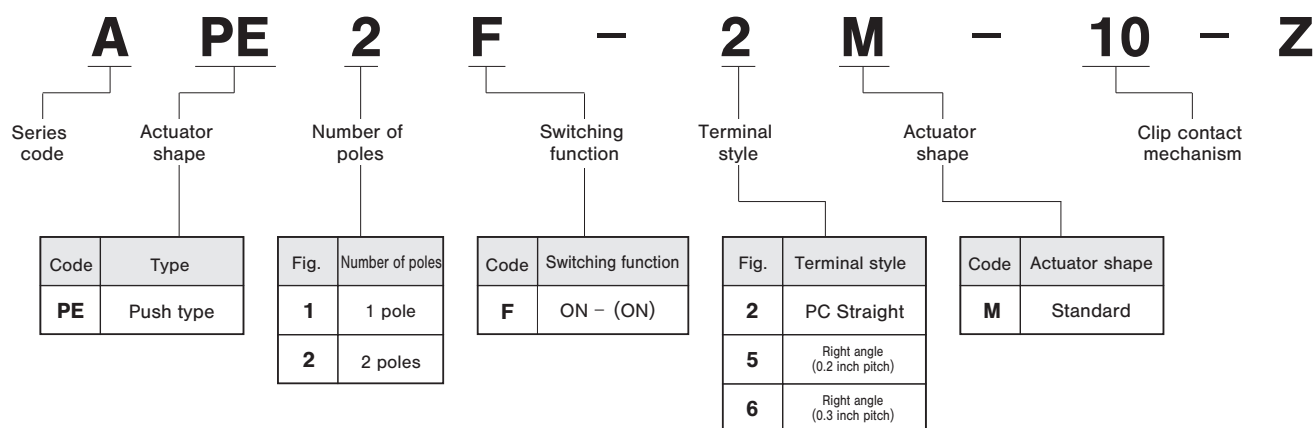
Features

1. Twin-contact clip mechanism for high reliability.
2. Process sealed structure
3. Gold-plated contacts.
4. Terminal pin pitch: 2.54 mm.
5. UL recognized

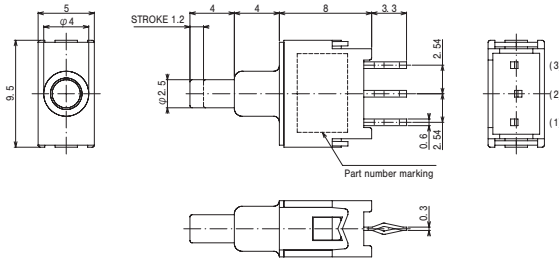
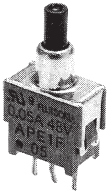
Specifications

Rating	0.4 VA AC/DC Max.:50 mA 60 VAC/DC Min.:1 μ A 20 mVAC/DC UL:48 VAC/DC 50 mA
Initial contact resistance	50 m Ω max. (1.5mA 200 μ VAC)
Dielectric strength	250 VAC 1 minute
Initial Insulation resistance	500 M Ω min. (500 VDC)
Electrical life	10,000 operations at maximum rating. 30,000 operations at 0.4 VA
Operating force	0.78 ~ 2.94 N
Operating temperature range	-20~+85 $^{\circ}$ C
Storage temperature range	-40~+85 $^{\circ}$ C

Part Numbering



SPDT

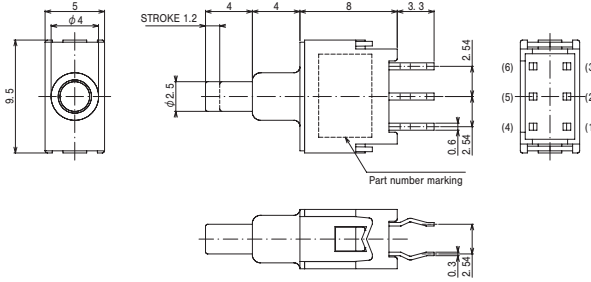


PC Straight

Terminal number not shown on box.

Switching function		
Part No.	APE1F-2M-10-Z	(ON)
Connecting terminals	2-3	2-1

DPDT

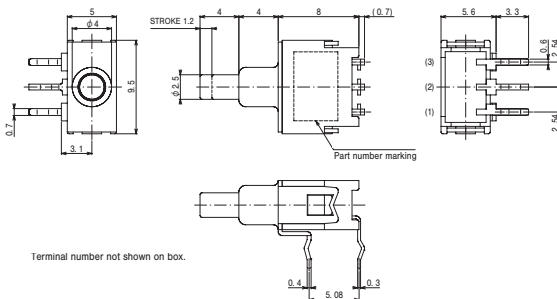
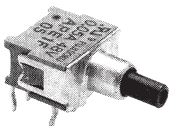


PC Straight

Terminal number not shown on box.

Switching function		
Part No.	APE2F-2M-10-Z	(ON)
Connecting terminals	2-3 5-6	2-1 5-4

SPDT

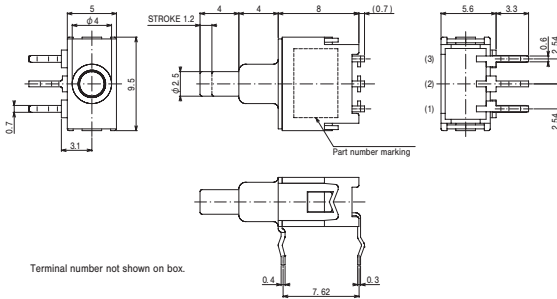
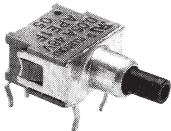


0.2R/A

Terminal number not shown on box.

Switching function		
Part No.	★ APE1F-5M-10-Z	(ON)
Connecting terminals	2-3	2-1

SPDT

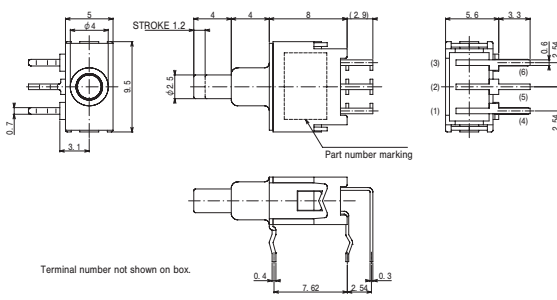
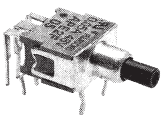


0.3R/A

Terminal number not shown on box.

Switching function		
Part No.	APE1F-6M-10-Z	(ON)
Connecting terminals	2-3	2-1

DPDT



0.3R/A

Terminal number not shown on box.

Switching function		
Part No.	☆ APE2F-6M-10-Z	(ON)
Connecting terminals	2-3 5-6	2-1 5-4

Table of Part Numbers

Term.style	Poles	Switching function	Part Number
PC Straight	1 pole	ON - (ON)	APE1F-2M-10-Z
	2 poles		APE2F-2M-10-Z
0.3R/A	1 pole		APE1F-6M-10-Z
	2 poles		☆ APE2F-6M-10-Z
0.2R/A	1 pole		★ APE1F-5M-10-Z

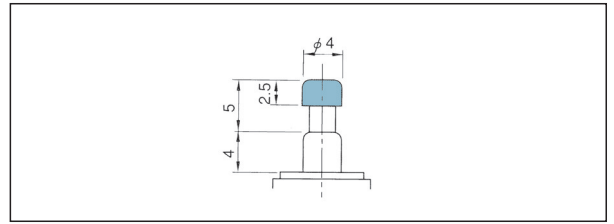
APE

■ **Optional Accessories**(10pcs./pack)
(AP·APE)

《Sold separately》

Color Cap for AP-M, APE-M & AP-S series		
Dimensions	Color	Part No.
<p>PC resin</p>	White	140000481402
	Red	140000481404
	Black	140000481403
	Gray	140000481408

■ **Color Cap Mounting**

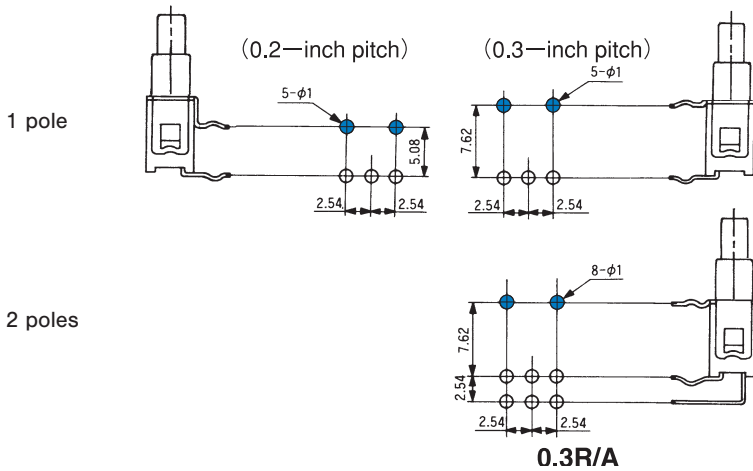


■ **Optional Accessories (AP · APE)**

《Sold separately》

Part name	Bracket		
	Single pole	Double poles	
Poles	Single pole	7.5 mm	5 mm
Box size	5 mm	7.5 mm	5 mm
Type	AP-M·APE-M·AP-H	AP-M·AP-H·APE-M	APE-M
Dimensions			
Part No.	140000640314	140000640315	140000640318

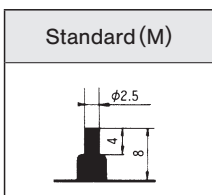
■ **Right angle terminals**



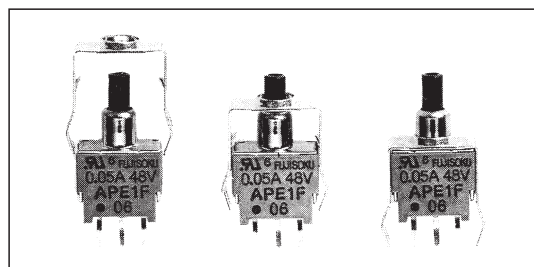
● The space between the terminal rows are available in two dimensions: 0.2 inches (5.08 mm) and 0.3 inches (7.62 mm).

[Example] 0.2-inch pitch : APE1F-5M-10-Z
0.3-inch pitch : APE1F-6M-10-Z

■ **Button Shape**



■ **Bracket Installation Procedure**



Mounting of Switch

- Use PC boards with hole diameter of 1mm.
- Do not bend the terminal pins before mounting the switch on the PC board.
- After mounting the switch, do not place the device in such a way that the device weight will be applied on to the actuator of the switch.
- Do not apply load exceeding 12.7 N to the actuator. If load exceeding 12.7 N is expected to be applied to the actuator, please use a Bracket (optional accessory sold separately). Maximum load will be 29.4 N when a Bracket is used.
- Use Bracket 140000640314 or 140000640318 for side-by-side mounting.
- To increase mounting strength, use Bracket 140000640315.
- PC Hole Layouts will change depending on the Bracket.

PC Hole Layouts (AP • APE)

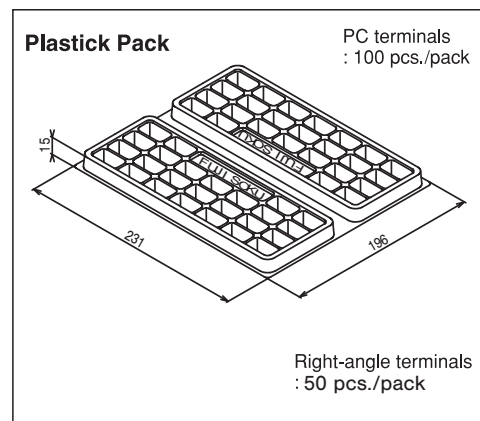
PC Straight

Mounting Type		Without Bracket	When optional Bracket is used.		
			140000640314	140000640315	140000640318
AP-M AP-S AP-H APE	1 pole				
	2 poles				
	APE				

Right-angle Terminal

Terminal Type		0.2-inch pitch	0.3-inch pitch
		AP-M AP-S APE	1 pole
2 poles			

Packaging Specification



■ Soldering Specifications

(1) Manual Soldering

Device : Soldering iron
380°C, Max.; 3 seconds, Max.

(2) Auto Soldering

Device : Jet wave type or dip type
275°C, Max.; 6 seconds, Max.

- Pre-heating should be done at temperatures ranging from 80°C to 120°C and within 120 seconds.

■ Flux Cleaning

(1) Solvent : Fluorine or Alcohol type.

(2) Cleaning after soldering should be done after the terminal temperature falls to 90°C or below, or after leaving the switch for five minutes or longer at room temperature.

(3) Do not use ultrasonic cleaning.
