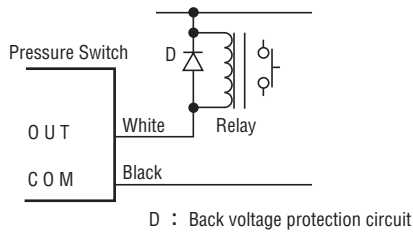


PRESSURE SWITCHES TYPICAL CIRCUIT CONNECTION

TYPICAL CIRCUIT CONNECTION

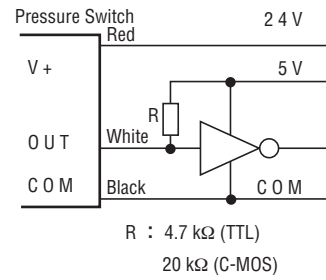
● Connection with a small size relay or a solenoid

Practically the switch can directly drive a small size, 1 W class, relay or a similar wattage solenoid at 24 V. Back voltage protection must be prepared.



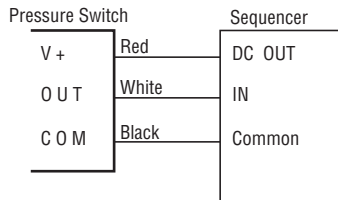
● Connection with TTL or CMOS

Due to the employment of the open collector configuration, a pull-up resistor is required.



● Connection with a sequence controller

The switch output can be directly connected to the non-contact input terminal of the sequence controller. The switch can make use of the sensor power supply from the sequence controller.



● Load current

A lamp load or like that may cause excessive current flow and requires the proper preventive measure.

