


Features

- Compliant with AEC-Q200 Rev-C Stress Test Qualification for Passive Components in Automotive Applications
- Compact design to save board space - 1206 footprint
- Small size results in very fast time to react to fault events
- Symmetrical design
- Low profile
- RoHS compliant* and halogen free**
- Agency recognition: 

PRCP-NSMF Series - Polymer Resettable Circuit Protectors

Electrical Characteristics

Model	V max. Volts	I max. Amps	I _{hold}	I _{trip}	Resistance		Max. Time To Trip		Tripped Power Dissipation
			Amperes at 23 °C		Ohms at 23 °C		Amperes at 23 °C	Seconds at 23 °C	Watts at 23 °C
			Hold	Trip	R _{Min.}	R _{1Max.}			Typ.
PRCP-NSMF012	30.0	10	0.12	0.29	1.35	8.50	1.0	0.20	0.4
PRCP-NSMF020	24.0	10	0.20	0.46	0.60	2.60	1.0	0.60	0.6
PRCP-NSMF020/30X***	30.0	60	0.20	0.40	0.60	3.30	1.0	0.60	0.6
PRCP-NSMF035	6.0	100	0.35	0.75	0.30	1.20	8.0	0.10	0.6
PRCP-NSMF035/16X***	16.0	20	0.35	0.75	0.30	1.40	3.5	0.14	0.6
PRCP-NSMF050	13.2	100	0.50	1.00	0.15	0.70	8.0	0.10	0.4
PRCP-NSMF075	6.0	100	0.75	1.50	0.10	0.40	8.0	0.10	0.4
PRCP-NSMF110	6.0	100	1.10	2.20	0.06	0.20	8.0	0.10	0.6
PRCP-NSMF150	6.0	100	1.50	3.00	0.03	0.13	8.0	0.30	0.6
PRCP-NSMF200	6.0	100	2.00	4.00	0.02	0.085	8.0	1.00	0.7

*** UL and TÜV

Environmental Characteristics

Operating Temperature.....	-40 °C to +85 °C
Maximum Device Surface Temperature in Tripped State	125 °C
Passive Aging	+85 °C, 1000 hours..... ±5 % typical resistance change
Humidity Aging	+85 °C, 85 % R.H. 1000 hours ±5 % typical resistance change
Thermal Shock	+85 °C to -40 °C, 20 times ±10 % typical resistance change
Solvent Resistance.....	MIL-STD-202, Method 215 No change
Vibration	MIL-STD-883C, Method 2007.1, No change Condition A

Test Procedures And Requirements For Model PRCP-NSMF Series

Test	Test Conditions	Accept/Reject Criteria
Visual/Mech.	Verify dimensions and materials	Per P.R.C.P. physical description
Resistance.....	In still air @ 23 °C.....	R _{min} ≤ R ≤ R _{1max}
Time to Trip.....	At specified current, V _{max} , 23 °C	T ≤ max. time to trip (seconds)
Hold Current	30 min. at I _{hold}	No trip
Trip Cycle Life	V _{max} , I _{max} , 100 cycles.....	No arcing or burning
Trip Endurance	V _{max} , 48 hours.....	No arcing or burning
Solderability.....	ANSI/J-STD-002	95 % min. coverage

UL File Number E300792

TÜV Certificate Number R50383882

* RoHS Directive 2015/863, Mar. 31, 2015 and Annex.

NIDEC COMPONENTS follows the prevailing definition of "halogen free" in the industry. NIDEC COMPONENTS considers a product to be "halogen free" if (a) the Bromine (Br) content is 900 ppm or less; (b) the Chlorine (Cl) content is 900 ppm or less; and (c) the total Bromine (Br) and Chlorine (Cl) content is 1500 ppm or less.

Specifications are subject to change without notice.

The device characteristics and parameters in this data sheet can and do vary in different applications and actual device performance may vary over time. Customers should verify actual device performance in their specific applications.

Applications

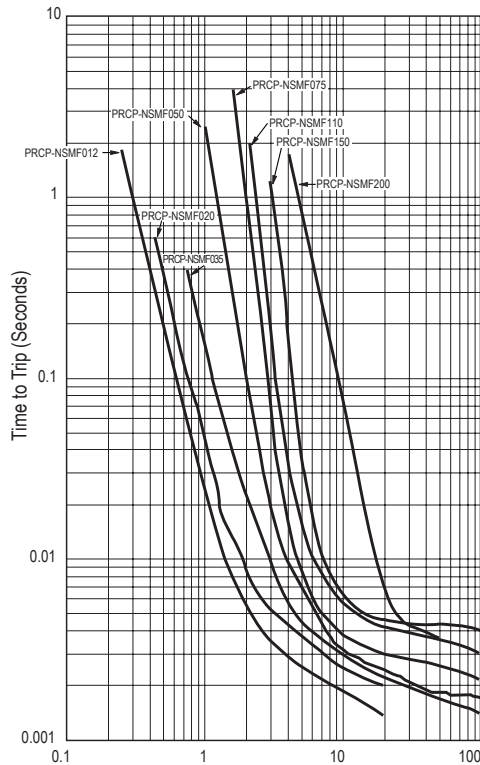
- USB port protection - USB 2.0, 3.0 & OTG
- Automotive electronic control modules
- HDMI 1.4 Source protection
- PC motherboards - Plug and Play protection
- Mobile phones - Battery and port protection
- PDAs / digital cameras
- Game console port protection

PRCP-NSMF Series - Polymer Resettable Circuit Protectors

Thermal Derating Chart - I_{hold} (Amps)

Model	Ambient Operating Temperature								
	-40 °C	-20 °C	0 °C	23 °C	40 °C	50 °C	60 °C	70 °C	85 °C
PRCP-NSMF012	0.19 / 0.46	0.17 / 0.41	0.15 / 0.36	0.12 / 0.29	0.11 / 0.27	0.10 / 0.24	0.09 / 0.22	0.08 / 0.19	0.07 / 0.17
PRCP-NSMF020	0.30 / 0.69	0.27 / 0.62	0.24 / 0.55	0.20 / 0.46	0.18 / 0.42	0.16 / 0.38	0.14 / 0.34	0.12 / 0.30	0.11 / 0.25
PRCP-NSMF020/30X	0.30 / 0.60	0.27 / 0.54	0.24 / 0.28	0.20 / 0.40	0.18 / 0.36	0.16 / 0.32	0.14 / 0.28	0.12 / 0.24	0.10 / 0.20
PRCP-NSMF035	0.51 / 1.25	0.46 / 1.16	0.40 / 0.95	0.35 / 0.75	0.30 / 0.70	0.27 / 0.66	0.24 / 0.60	0.22 / 0.55	0.18 / 0.44
PRCP-NSMF035/16X	0.58 / 1.24	0.51 / 1.09	0.44 / 0.94	0.35 / 0.75	0.31 / 0.66	0.28 / 0.60	0.24 / 0.51	0.21 / 0.45	0.16 / 0.34
PRCP-NSMF050	0.76 / 1.52	0.68 / 1.36	0.59 / 1.18	0.50 / 1.00	0.44 / 0.88	0.40 / 0.80	0.35 / 0.70	0.32 / 0.64	0.26 / 0.52
PRCP-NSMF075	1.11 / 2.22	1.00 / 2.00	0.85 / 1.70	0.75 / 1.50	0.67 / 1.34	0.61 / 1.22	0.52 / 1.04	0.50 / 1.00	0.42 / 0.84
PRCP-NSMF110	1.64 / 3.28	1.46 / 2.92	1.30 / 2.60	1.10 / 2.20	0.92 / 1.84	0.83 / 1.66	0.80 / 1.60	0.65 / 1.30	0.52 / 1.04
PRCP-NSMF150	2.20 / 4.40	1.99 / 3.98	1.77 / 3.54	1.50 / 3.00	1.34 / 2.68	1.23 / 2.46	1.10 / 2.20	1.01 / 2.02	0.84 / 1.68
PRCP-NSMF200	2.88 / 5.76	2.61 / 5.22	2.28 / 4.56	2.00 / 4.00	1.80 / 3.60	1.66 / 3.32	1.51 / 3.02	1.39 / 2.78	1.19 / 2.38

Typical Time to Trip at 23 °C



The Time to Trip curves represent typical performance of a device in a simulated application environment. Actual performance in specific customer applications may differ from these values due to the influence of other variables.

How to Order

PRCP - NSMF 020/30 X - 2 E

Product Designator _____

Series _____
 NSMF = 1206 Surface Mount Component

Hold Current, I_{hold} _____
 012-200 (0.12 Amps - 2.00 Amps)

High Voltage Options _____
 ___ = Standard
 /16 = 16 Volt Rated
 /30 = 30 Volt Rated
 X = Product Shape

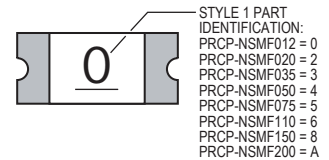
Packaging _____
 Packaged per EIA 481-1
 -2 = Tape and Reel

Halogen Free _____

Non Hidden Foil _____

Typical Part Marking

Represents total content. Layout may vary.



BIWEEKLY DATE CODE WILL APPEAR ON THE PACKAGING LABEL:
 WEEK 1 AND 2 = A
 WEEK 51 AND 52 = Z

Specifications are subject to change without notice. The device characteristics and parameters in this data sheet can and do vary in different applications and actual device performance may vary over time. Customers should verify actual device performance in their specific applications.

PRCP-NSMF Series - Polymer Resettable Circuit Protectors

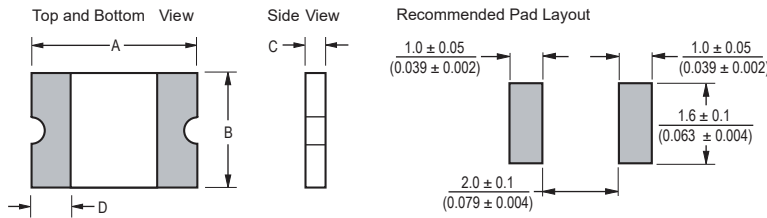
Product Dimensions

Model	A		B		C		D	Style
	Min.	Max.	Min.	Max.	Min.	Max.	Min.	
PRCP-NSMF012	3.00 (0.118)	3.40 (0.134)	1.40 (0.055)	1.80 (0.071)	0.70 (0.028)	1.10 (0.043)	0.25 (0.010)	1
PRCP-NSMF020	3.00 (0.118)	3.40 (0.134)	1.40 (0.055)	1.80 (0.071)	0.48 (0.019)	0.85 (0.033)	0.25 (0.010)	1
PRCP-NSMF020/30X	3.00 (0.118)	3.40 (0.134)	1.40 (0.055)	1.80 (0.071)	0.40 (0.016)	0.85 (0.033)	0.25 (0.010)	2
PRCP-NSMF035	3.00 (0.118)	3.40 (0.134)	1.40 (0.055)	1.80 (0.071)	0.48 (0.019)	0.85 (0.033)	0.25 (0.010)	1
PRCP-NSMF035/16X	3.00 (0.118)	3.40 (0.134)	1.40 (0.055)	1.80 (0.071)	0.40 (0.016)	0.85 (0.033)	0.25 (0.010)	2
PRCP-NSMF050	3.00 (0.118)	3.40 (0.134)	1.40 (0.055)	1.80 (0.071)	0.48 (0.019)	0.85 (0.033)	0.25 (0.010)	1
PRCP-NSMF075	3.00 (0.118)	3.40 (0.134)	1.40 (0.055)	1.80 (0.071)	0.40 (0.016)	0.70 (0.028)	0.25 (0.010)	1
PRCP-NSMF110	3.00 (0.118)	3.40 (0.134)	1.40 (0.055)	1.80 (0.071)	0.40 (0.016)	0.70 (0.028)	0.25 (0.010)	1
PRCP-NSMF150	3.00 (0.118)	3.40 (0.134)	1.40 (0.055)	1.80 (0.071)	0.40 (0.016)	0.70 (0.028)	0.25 (0.010)	1
PRCP-NSMF200	3.00 (0.118)	3.50 (0.138)	1.40 (0.055)	1.80 (0.071)	0.70 (0.028)	1.60 (0.063)	0.25 (0.010)	1

Packaging: 3000 pcs. per reel.

DIMENSIONS: $\frac{\text{MM}}{\text{(INCHES)}}$

Style 1

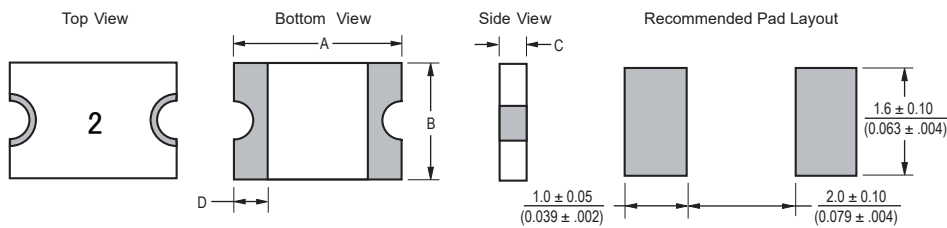


Terminal material:
Electroless Ni under immersion Au

Termination pad solderability:
Standard Au finish:
Meets ANSI/J-STD-002 Category 2.

Recommended Storage:
40 °C max./70 % RH max.

Style 2

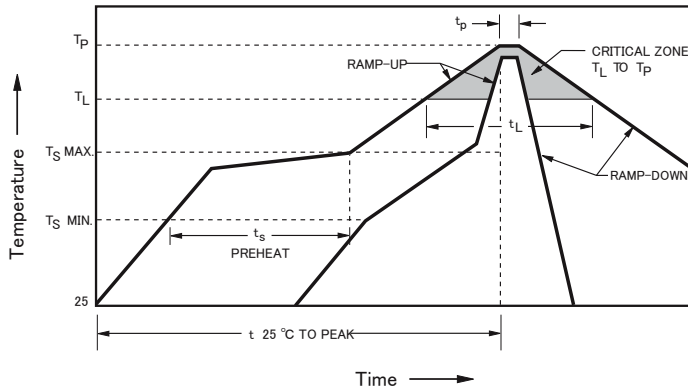


Specifications are subject to change without notice.

The device characteristics and parameters in this data sheet can and do vary in different applications and actual device performance may vary over time. Customers should verify actual device performance in their specific applications.

PRCP-NSMF Series - Polymer Resettable Circuit Protectors

Solder Reflow Recommendations



Notes:

- PRCP-NSMF models are intended for reflow soldering (including, but not limited to heating plate, hot air, IR, nitrogen, and vapor phase).
- Wave soldering is permissible only if the device is on the top of the PCB, opposite the heat source.
- Hand soldering is not recommended for these devices.
- All temperatures refer to the topside of the device, measured on the device body surface.
- If reflow temperatures exceed the recommended profile, devices may not meet the published specifications.
- Compatible with Pb and Pb-free solder reflow profile.
- Excess solder may cause a short circuit.

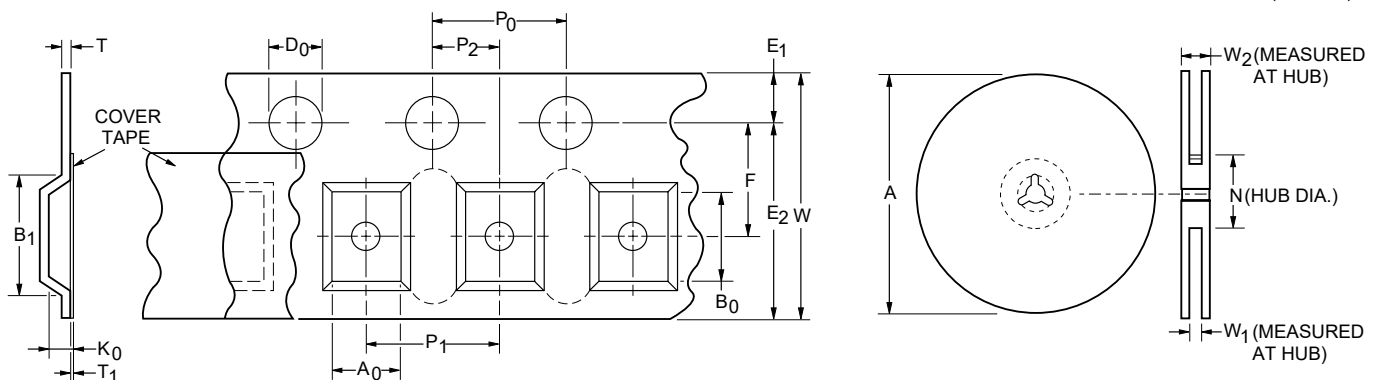
Profile Feature	Pb-Free Assembly
Average Ramp-Up Rate ($T_{s\ max}$ to T_p)	3 °C / second max.
PREHEAT: Temperature Min. ($T_{s\ min}$) Temperature Max. ($T_{s\ max}$) Time ($T_{s\ min}$ to $T_{s\ max}$) (ts)	150 °C 200 °C 60~180 seconds
TIME MAINTAINED ABOVE: Temperature (T_L) Time (t_L)	217 °C 60~150 seconds
Peak Temperature (T_p)	260 °C
Time within 5 °C of Actual Peak Temperature (t_p)	20~40 seconds
Ramp-Down Rate	6 °C / second max.
Time 25 °C to Peak Temperature	8 minutes max.

Specifications are subject to change without notice.
 The device characteristics and parameters in this data sheet can and do vary in different applications and actual device performance may vary over time.
 Customers should verify actual device performance in their specific applications.

PRCP-NSMF Series Tape and Reel Specifications

Tape Dimensions	PRCP-NSMF012 & PRCP-NSMF200 per EIA 481-1	PRCP-NSMF020 ~ PRCP-NSMF050 per EIA 481-1	PRCP-NSMF075 ~ PRCP-NSMF150 per EIA 481-1	PRCP-NSMF020/30X & PRCP-NSMF035/16X per EIA 481-1
W	8.0 ± 0.30 (0.315 ± 0.012)	8.0 ± 0.30 (0.315 ± 0.012)	8.0 ± 0.30 (0.315 ± 0.012)	8.0 ± 0.30 (0.315 ± 0.012)
P ₀	4.0 ± 0.10 (0.157 ± 0.004)	4.0 ± 0.10 (0.157 ± 0.004)	4.0 ± 0.10 (0.157 ± 0.004)	4.0 ± 0.10 (0.157 ± 0.004)
P ₁	4.0 ± 0.10 (0.157 ± 0.004)	4.0 ± 0.10 (0.157 ± 0.004)	4.0 ± 0.10 (0.157 ± 0.004)	4.0 ± 0.10 (0.157 ± 0.004)
P ₂	2.0 ± 0.05 (0.079 ± 0.002)	2.0 ± 0.05 (0.079 ± 0.002)	2.0 ± 0.05 (0.079 ± 0.002)	2.0 ± 0.05 (0.079 ± 0.002)
A ₀	1.90 ± 0.10 (0.075 ± 0.004)	1.90 ± 0.10 (0.075 ± 0.004)	1.90 ± 0.10 (0.075 ± 0.004)	1.90 ± 0.10 (0.075 ± 0.004)
B ₀	3.50 ± 0.10 (0.138 ± 0.004)	3.45 ± 0.10 (0.136 ± 0.004)	3.45 ± 0.10 (0.136 ± 0.004)	3.55 ± 0.10 (0.140 ± 0.004)
B ₁ max.	4.35 (0.171)	4.35 (0.171)	4.35 (0.171)	4.35 (0.171)
D ₀	$1.5 + 0.10/-0.0$ (0.059 + 0.004/-0)	$1.5 + 0.10/-0.0$ (0.059 + 0.004/-0)	$1.5 + 0.10/-0.0$ (0.059 + 0.004/-0)	$1.5 + 0.10/-0.0$ (0.059 + 0.004/-0)
F	3.5 ± 0.05 (0.138 + 0.002)	3.5 ± 0.05 (0.138 + 0.002)	3.5 ± 0.05 (0.138 + 0.002)	3.5 ± 0.05 (0.138 + 0.002)
E ₁	1.75 ± 0.10 (0.069 ± 0.004)	1.75 ± 0.10 (0.069 ± 0.004)	1.75 ± 0.10 (0.069 ± 0.004)	1.75 ± 0.10 (0.069 ± 0.004)
E ₂ min.	6.25 (0.246)	6.25 (0.246)	6.25 (0.246)	6.25 (0.246)
T max.	0.6 (0.024)	0.6 (0.024)	0.6 (0.024)	0.6 (0.024)
T ₁ max.	0.1 (0.004)	0.1 (0.004)	0.1 (0.004)	0.1 (0.004)
K ₀	1.35 ± 0.10 (0.053 ± 0.004)	1.04 ± 0.10 (0.041 ± 0.004)	0.85 ± 0.10 (0.033 ± 0.004)	0.80 ± 0.10 (0.032 ± 0.004)
Leader min.	390 (15.35)	390 (15.35)	390 (15.35)	390 (15.35)
Trailer min.	160 (6.30)	160 (6.30)	160 (6.30)	160 (6.30)
Reel Dimensions				
A max.	185 (7.28)	185 (7.28)	185 (7.28)	185 (7.28)
N min.	50 (1.97)	50 (1.97)	50 (1.97)	50 (1.97)
W ₁	$8.4 + 1.5/-0.0$ (0.331 + 0.059/-0)	$8.4 + 1.5/-0.0$ (0.331 + 0.059/-0)	$8.4 + 1.5/-0.0$ (0.331 + 0.059/-0)	$8.4 + 1.5/-0.0$ (0.331 + 0.059/-0)
W ₂ max.	14.4 (0.567)	14.4 (0.567)	14.4 (0.567)	14.4 (0.567)

DIMENSIONS: $\frac{\text{MM}}{\text{(INCHES)}}$



Specifications are subject to change without notice.

The device characteristics and parameters in this data sheet can and do vary in different applications and actual device performance may vary over time. Customers should verify actual device performance in their specific applications.